

# HOW TO INSTALL TEAMVIEWER WINDOWS CHROME/ FIREFOX/INTERNET EXPLORER

---

This guide will help you download and install TeamViewer on your **Windows PC**.



If you are using **Google Chrome**, please follow the instructions on **Page 2**



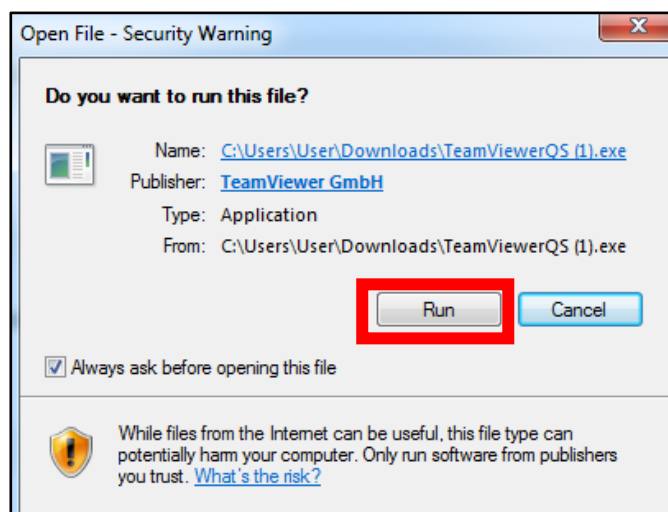
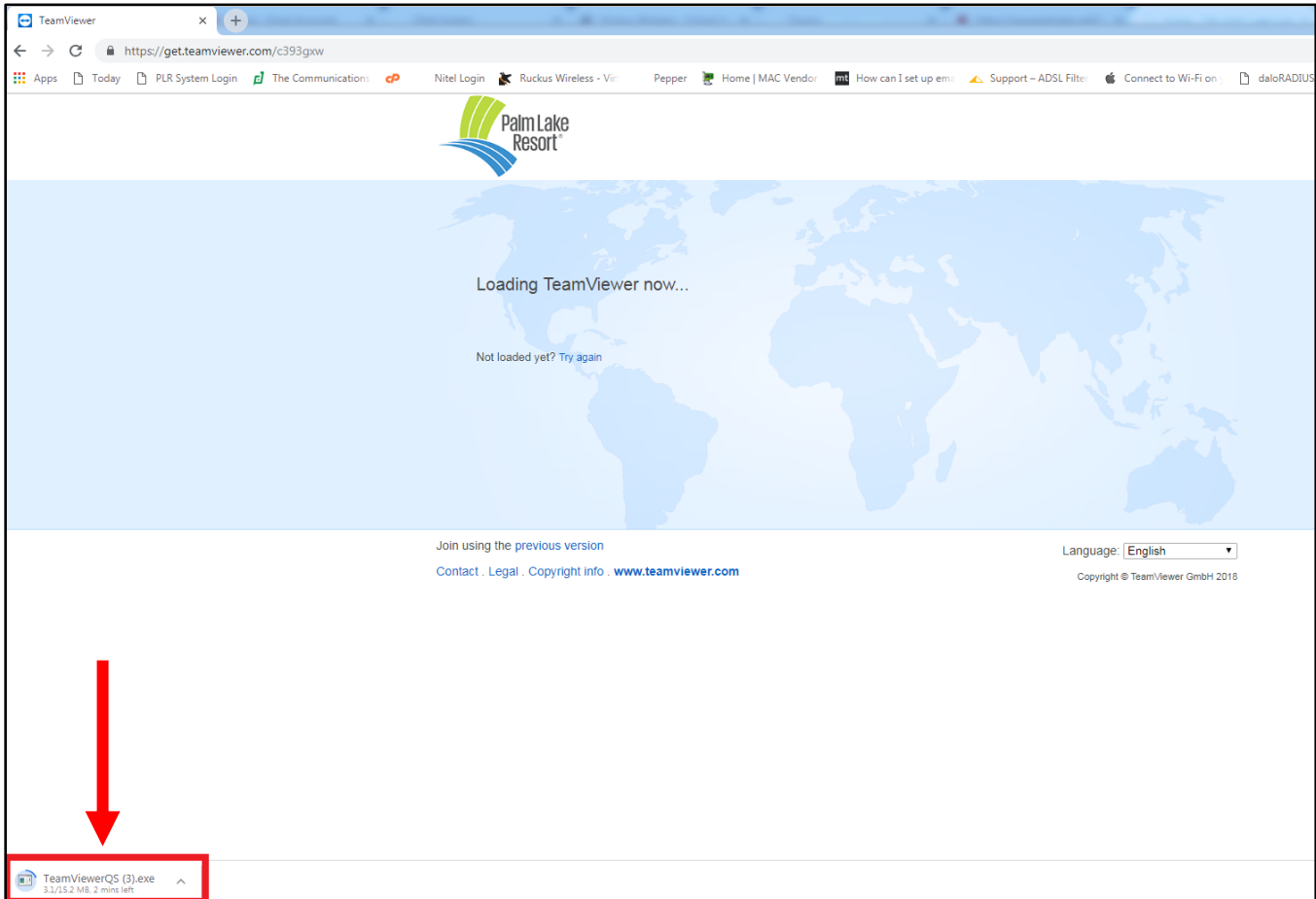
If you are using **Firefox**, please follow instructions on **Page 3**



If you are using **Internet Explorer**, please follow instructions on **Page 4**

**CHROME:**

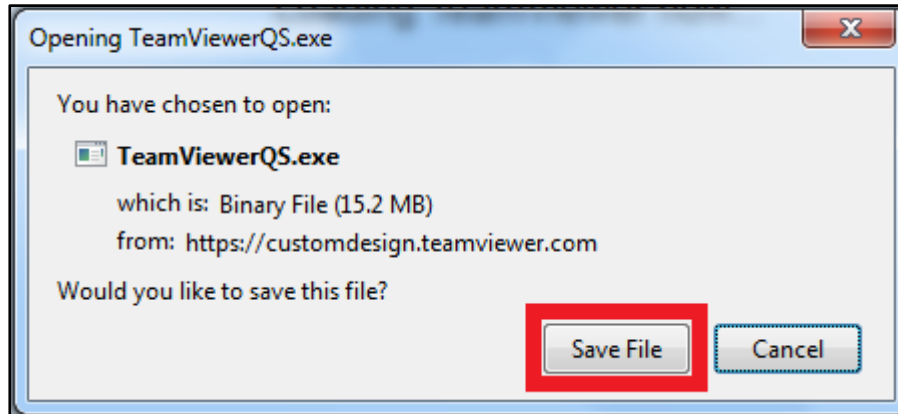
When you click the link in the email you will be taken to this webpage and TeamViewer will start to download automatically. Once it has finished downloading, double click the icon in the red box (lower left hand corner). You will then see this: Click the **'Run'** button to proceed.



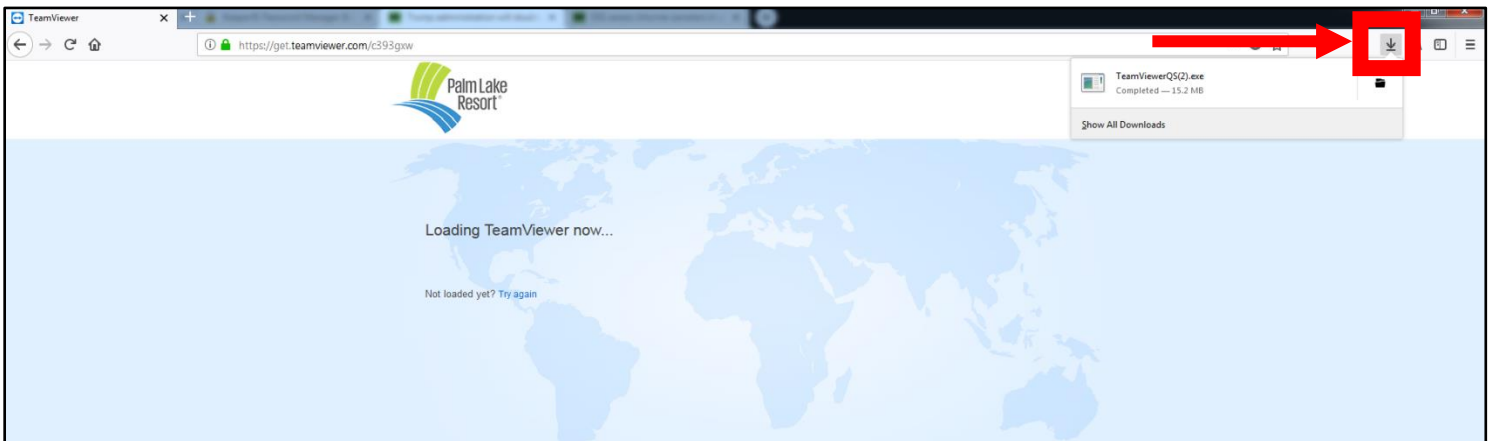
\* Please now follow the instructions on Page 5

**FIREFOX:**

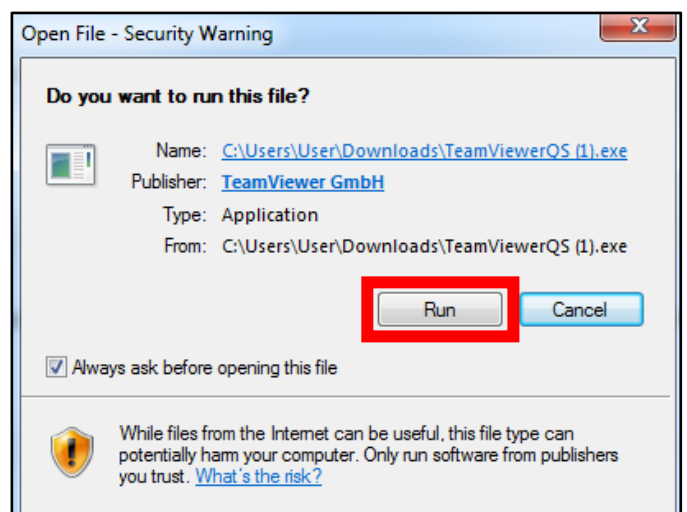
When you click the link in the email you will be taken to this webpage and TeamViewer will start to download automatically, this box will pop up on the screen. Click on the **'Save File'** button.



After you have clicked the save file button click on the icon in the red square then click on TeamViewerQS.exe



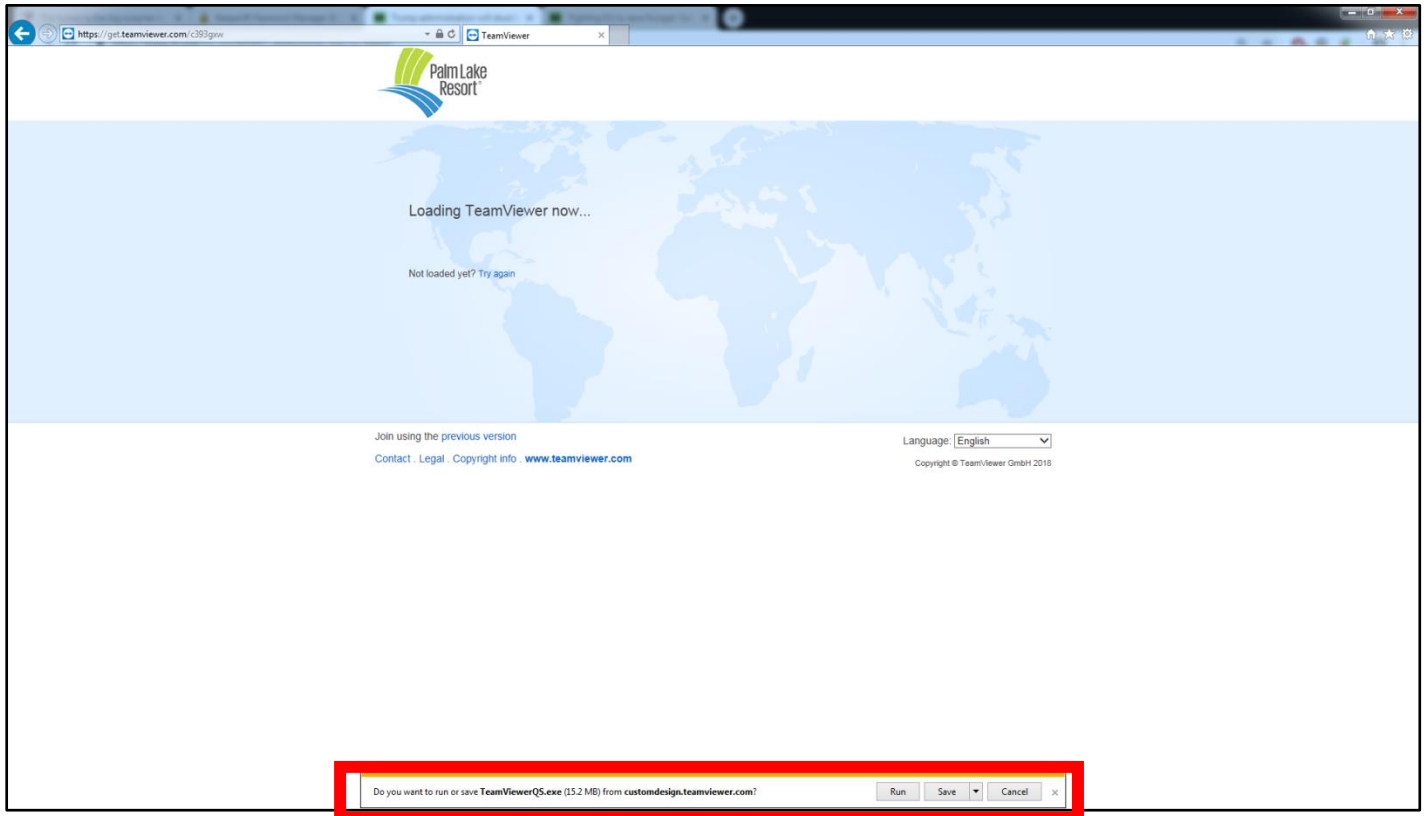
You will then see this: Click the **'Run'** button to proceed.



**\* Please now follow the instructions on Page 5**



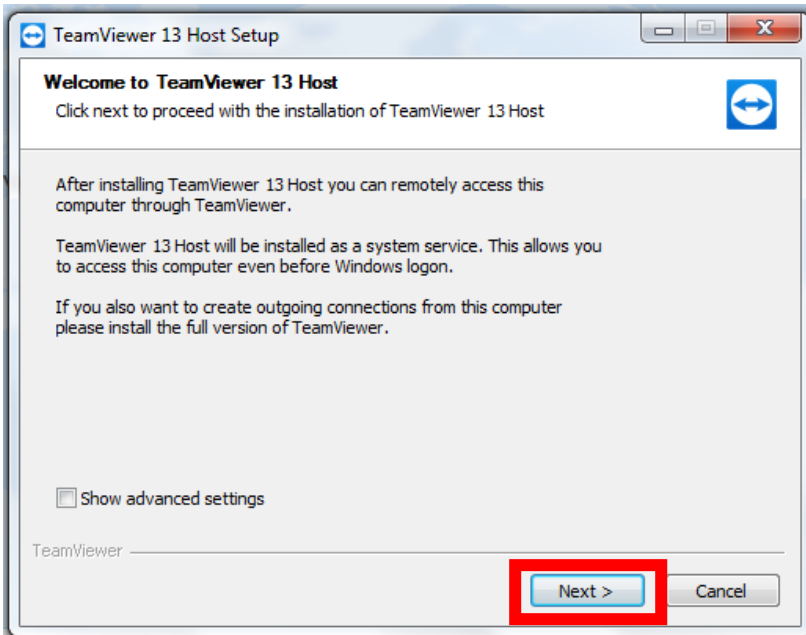
When you click the link you will be taken this page a box will appear at the bottom of the page, click the 'Run' button.



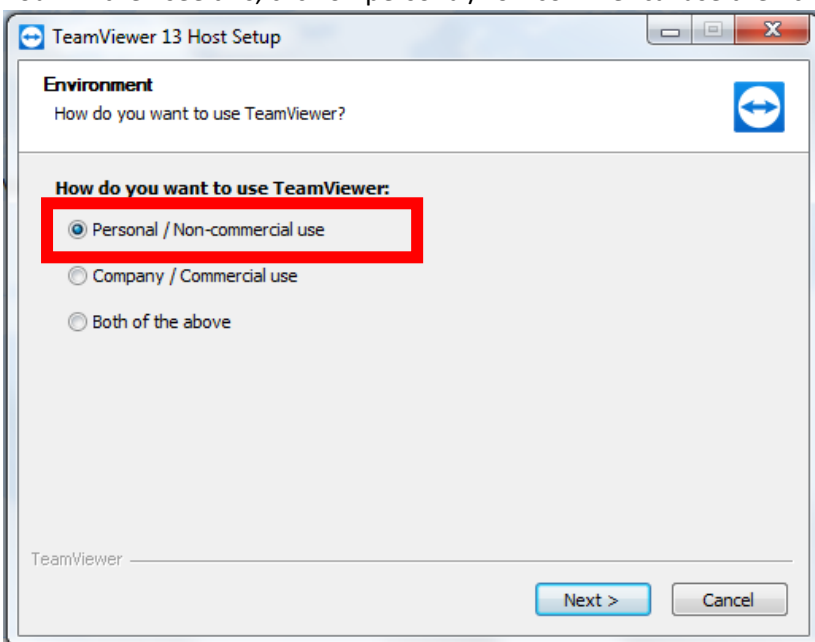
\* Please now follow the instructions on Page 5

### How to install TeamViewer on Windows:

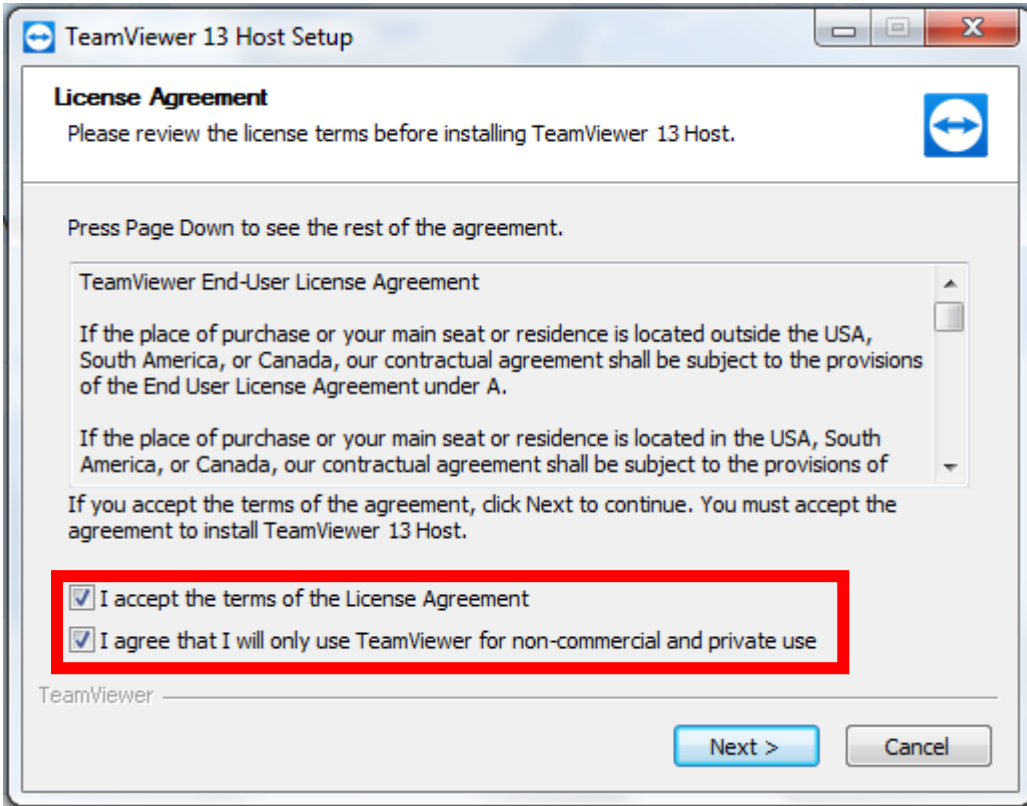
After you have followed the instructions above you will be presented with this window, click on the next button to proceed.



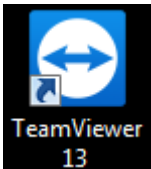
You will then see this, click on personal/non-commercial use then click next.



You will then be presented with this screen, click on the boxes then click next to proceed.



TeamViewer will now be installed on your computer. There will be an icon on your desktop that looks like this:



You do not need to do anything further at this time, if you experience difficulties with your email after the upgrade call the IT help desk on **07 5559 7988** and they may direct you to open TeamViewer so they can access your computer to fix up any technical issues.

You can also contact the Help Desk by dialling the following code on your PLR landline phone:

**Sites in NSW: 79**

**Sites in Queensland: 9**