

HOW TO INSTALL TEAMVIEWER on your MAC SAFARI/CHROME

This guide will help you download and install TeamViewer on your Windows PC.



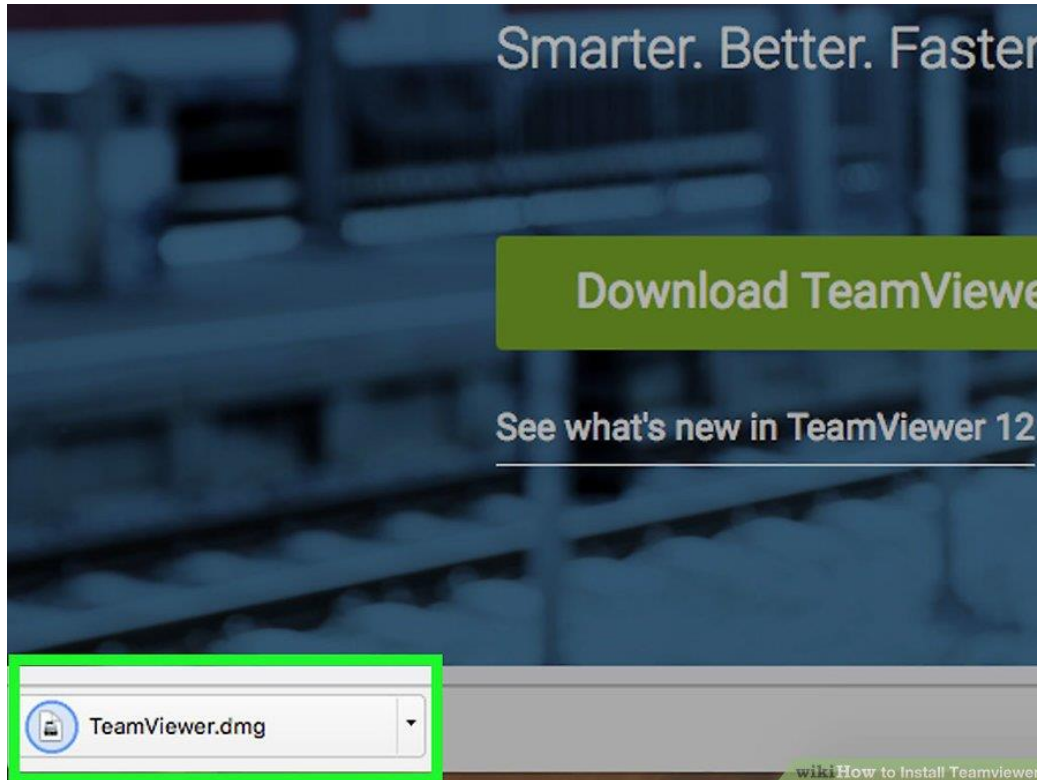
If you are using Google Chrome, please follow the instructions on Page 2



If you are using Safari, please follow the instructions on page 3

**CHROME:**

When you click the link in the email you will be taken to this webpage and TeamViewer will start to download automatically. Once it has finished downloading, Click on TeamViewer.dmg (in the green box). It will be in your downloads list.



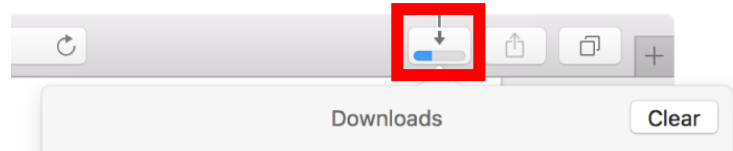
Please follow additional instructions on page 3

**SAFARI:**

When you click the link in the email safari will start to download Team Viewer, if you click one of these icons it will bring up your downloads and you will see TeamViewer.dmg



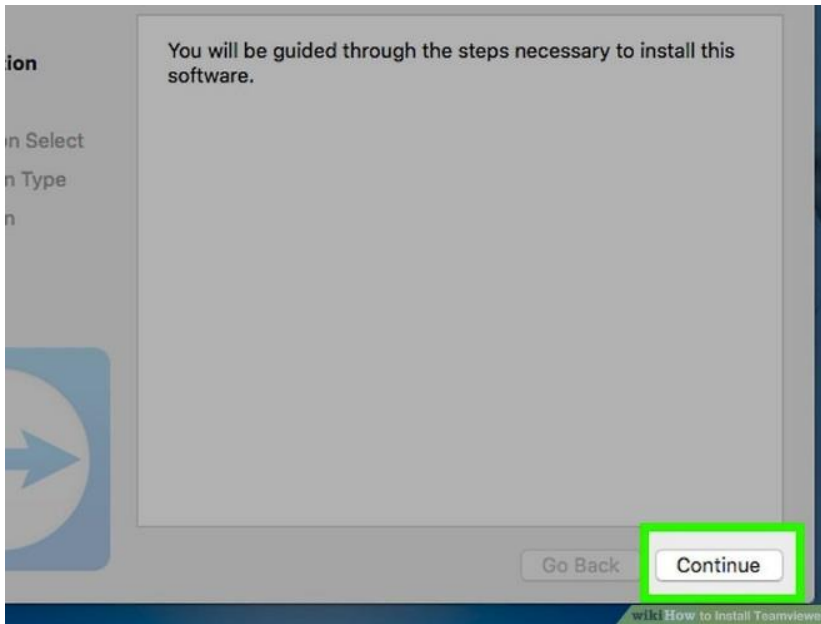
or



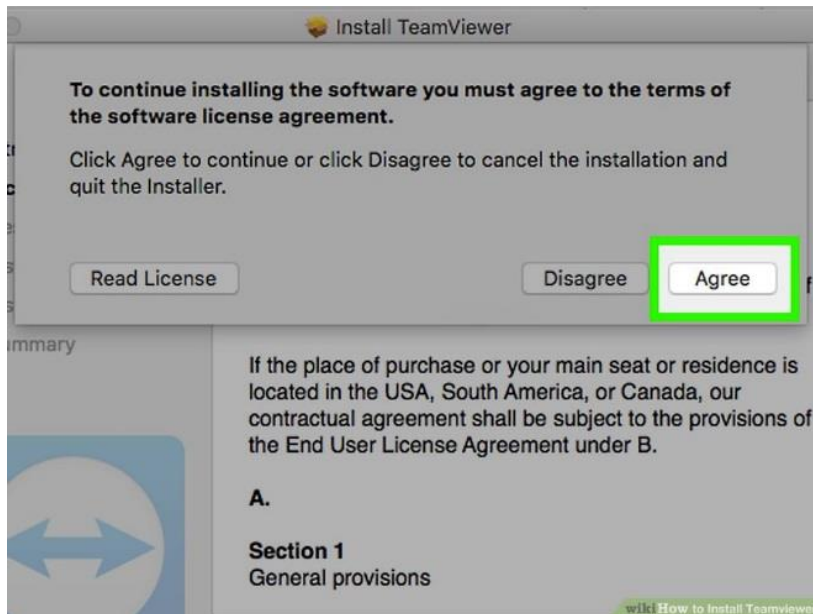
Once you have downloaded Team Viewer: Click on TeamViewer.dmg this window will appear
Double click to start TeamViewer



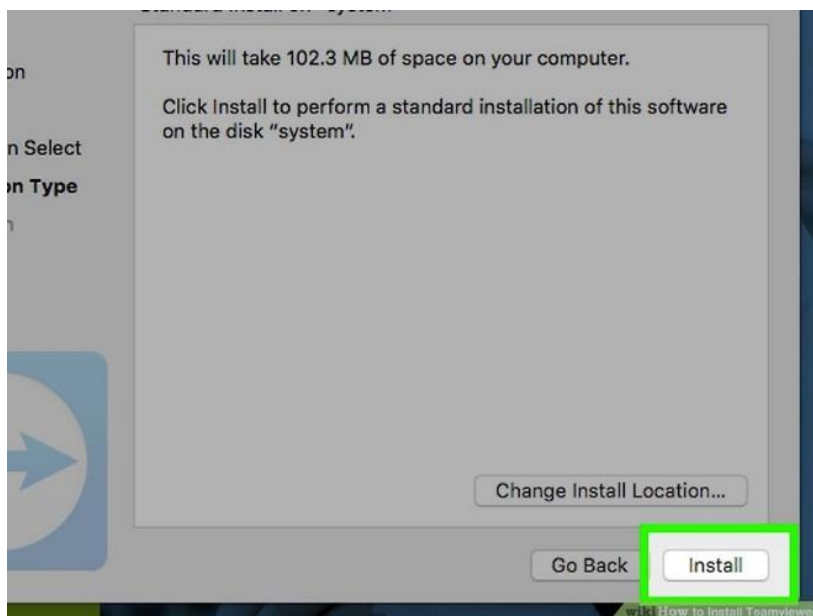
Click continue to install Team Viewer.



Click agree



Click install



The Team Viewer Icon will now be on your bottom bar.

You do not need to do anything further, if you experience difficulties with your email after the upgrade call the IT help desk and they will direct on (07) 5559 7988 you to open TeamViewer so they can access your computer.

You can also contact the Help Desk by dialling the following on your landline phone:

Sites in NSW: 79

All Other sites: 9

